



Part Number: 05L2161

ThinkPad 600 Quick Reference and Service Information

Your name:

Company name:

Model number:

Serial number:

Company or reseller service:

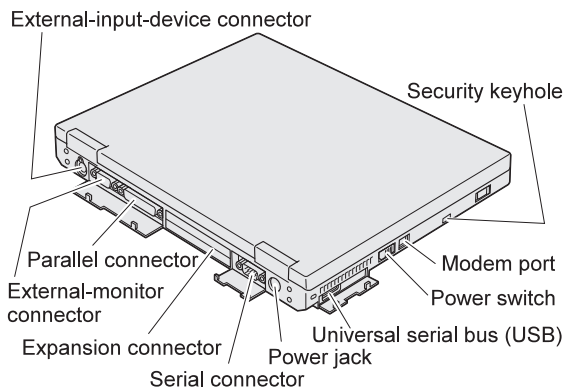
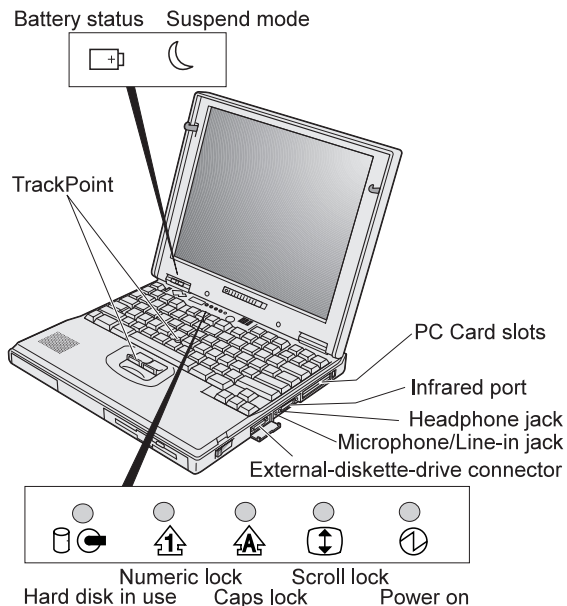
IBM service Web site:

IBM service number:

The IBM service number for your country can be found in the *International Service Information* booklet shipped with your computer.

Notes:

Location



Replacing the UltralimBay Device

You want to...	You need to...
The CD-ROM drive is in the UltralimBay	
install the diskette drive in the bay	enter suspend mode or power off your computer; then swap the device.
attach the diskette drive externally	power off your computer; then attach the diskette drive.
The diskette drive is in the UltralimBay	
install the CD-ROM drive in the bay	enter suspend or power off your computer; then swap the device.
install the CD-ROM drive in the bay and attach the diskette drive externally	power off your computer; then swap and attach the devices.

Function Keys

Fn +	Result
F2	The window for the battery power status appears or disappears. (The Fuel-Gauge program must first be activated.)
F3	The computer enters standby mode.
F4	The computer enters suspend mode.
F7	The display output location changes.
F11	During battery-power operation, the power mode changes.
F12	The computer enters hibernation mode.

Getting Service

Always read the “Solving Computer Problems” chapter of your *User's Reference* before calling IBM.

During the warranty period, you can get help and information from HelpCenter in your country. Before you call, fill out the front of this card. Also have:

- The exact wording of any error messages
- Hardware and software configuration information
- A description of the problem
- Information and serial numbers of any options installed on your system

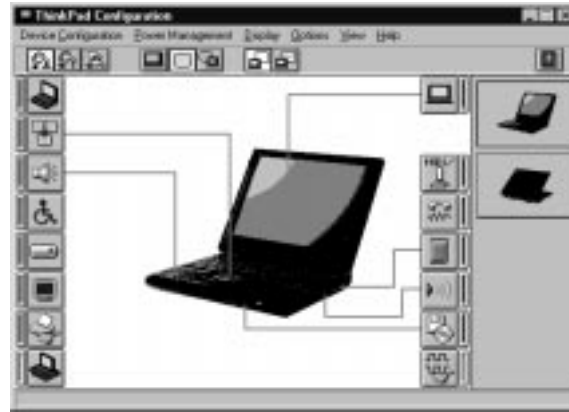
International Warranty Service

Before you travel outside of the country where you purchased your ThinkPad, register for international warranty service. Using the online product registration does not automatically register you for international service.

See the *International Service Information* booklet shipped with your computer.


ThinkPad Configuration Program

You can customize your hardware system settings with the ThinkPad Configuration program. To start the ThinkPad Configuration program, double-click on the **ThinkPad** icon at the right side of the taskbar.



For more information, click on the **Help** button



Power Management: To manage your battery power efficiently, you can set the power-saving mode with the ThinkPad Configuration program. Click on the **Power Management** button  and then click on the **Power Mode** tab. You can specify one of the following power modes:

High Performance maintains the system at maximum performance.

Automatic provides optimum power performance automatically, based on the battery charge.

Customize enables you to specify the settings manually.

TrackPoint Setting: You can customize such TrackPoint functions as **Press-to-Select**, **Sensitivity**, and **Scrolling**.

Click on the **TrackPoint** button .

Battery Status

You can monitor the battery status with the Fuel-Gauge program. To start the Fuel-Gauge program, click on **Start** and move the cursor to **ThinkPad**; then click on **Fuel-Gauge**.

For Further Information

You can find the following information in your ThinkPad library.

User's Reference	Online Book
Expanding the capability of your computer	Using ThinkPad outside your country
Protecting your computer	Using the audio, infrared, and modem features
Troubleshooting	Operating with the battery pack
Getting service	Using a PC Card
Specifications	Resolving system resource conflicts
Warranties and notices	Troubleshooting
Glossary and index	Installing software
	Managing your system
	Using PS2 commands
Note: To see the online book, click on Start , move the cursor to Programs and ThinkPad 600 ; then click on ThinkPad 600 User's Guide .	