

IBM

IntelliStation



*The Professional Workstation.*

# The New Seat of Power

For those who see the future and give shape to it today...for those who create, reveal and explore...for those in hot pursuit of excellence—take your place at the new IBM IntelliStation M Pro.

This new-generation professional NT workstation from IBM responds with startling speed. Advanced Intel® Pentium® II processors race at up to 400MHz<sup>1</sup> in single or dual SMP configurations, ramcharged by the 100MHz system bus and 512KB of L2 cache. Choose from accelerated 2D/3D graphics solutions.

## **Application-focused performance**

Choosing a Windows® NT® workstation ultimately comes down to satisfying your top priority: to energize your specialized software with a tool of superlative performance and compatibility. The new IBM IntelliStation M Pro achieves that goal with its balanced-bandwidth design optimized for peak application performance.

## **Certified for success**

Working in tandem with leading application developers, IBM provides technical expertise, long-lead prototypes—even code-level collaboration on problematic issues like driver compatibility—to prepare the IntelliStation M Pro for the superior application performance that you demand. These premiere vendors have tested the IBM IntelliStation M Pro to verify compatibility with their business-critical engineering, digital media content creation, financial and scientific applications. You can work confident that your IBM

IntelliStation is accredited by the source you most trust: the companies that provide the software you rely on every working day. See our Web site for the current list of supported applications: [www.ibm.com/pc/us/intellistation](http://www.ibm.com/pc/us/intellistation)

## **Application-focused graphics**

IBM knows—as you do—that graphics response is a defining criteria for workstation performance. IntelliStation professional workstations deliver, with a choice of dimensions. For 2D display, the Matrox Millennium II graphics card is the front runner, combining expansive resolutions with high refresh rates for brilliant, flicker-free images. Advanced features include dual-ported WRAM, double- and Z-buffering, and multiple monitor support with up to four cards. For demanding 2D display and a wide range of 3D projects, the PERMEDIA 2 enhanced card taps into the dedicated AGP slot for increased bandwidth and speed. Features such as OpenGL support, 100MHz SGRAM and 16-bit Z-buffering further enhance the GLINT-based power of the PERMEDIA 2 enhanced. For your most exacting 3D applications, the Intense 3D Pro 3400 by Intergraph displays electrifying performance. Stacked with 16MB of video SDRAM and 16MB of texture

SDRAM, you'll get the detailed view with true-color 1280x1024 resolution, 24- or 32-bit Z-buffering for precision object ordering, Gouraud shading, trilinear texture mapping and support for both OpenGL and Heidi. The available Intergraph geometry and lighting accelerator—supercharged with 14 digital signal processors (DSPs)—makes the IntelliStation the ultimate 3D environment on Windows NT. The IBM IntelliStation's real-time graphics eliminate the wait and let you create.

## **Your competitive edge— IBM SystemXtra**

IBM SystemXtra is designed to make the most of your IT investment by combining a host of technologies, services and flexible financing to make your job easier. These services include training, on-site recovery assistance and network maintenance. Combined with IBM's Technology Exchange—a flexible and affordable way to upgrade your leased computers after only two years—for a single monthly invoice.



### The IntelliStation advantage

IBM is committed to help you deploy, manage and protect your workstation investment. For example, IBM's Asset ID<sup>2</sup> technology can identify and track the movement of IntelliStations "branded" with radio frequency ID tags to streamline deployment, inventory and security measures. Monitor hard drive performance with IBM's SMART Reaction™ proactive failure tools featuring customized client/manager alerts and automatic backup to ensure the safety of your valuable data. IBM introduced standards-based remote

system management to the industry with Wake on LAN (WOL), enabling IS managers to power on systems over the network to perform off-hours tasks such as configuration and software updates. WOL is now supplemented by Alert on LAN technology that monitors and reports on temperature, voltage, chassis intrusion, component removal, disconnection to power or the LAN—even when the

computer is powered off! Alert on LAN works as a stand-alone application or in conjunction with IBM's Netfinity Manager and Intel's LANdesk Client Manager®—both software clients<sup>3</sup> are included with IntelliStation—providing unprecedented control over your domain.







# IntelliStation

## Digital Media



### Achieve more—better and faster— with the IBM IntelliStation

Introducing the IBM IntelliStation. From the stealth-gray fuselage to the pixel-perfect display, you sense the raw energy of this machine. A can-do attitude that steps up to your daily challenge: to produce more, in less time, with higher quality. A new class of workstation designed to invigorate your art and energized to keep inspiration flowing. The IBM IntelliStation combines Intel's most advanced Pentium II processors with Microsoft Windows NT 4.0, the new standard for 32-bit computing. Result? Workstation power *and* the ultimate in desktop productivity. From image processing to 3D modeling and rendering, to digital video and reality-altering effects—as well as your everyday word processor, project manager and e-mail. Ready to plug-and-go with your current network and interoperable with UNIX environments for the ultimate in cross-platform productivity.

### Supported Applications

*Adobe Systems, Inc.*  
Adobe After Effects  
Adobe Photoshop  
Adobe Premiere

*Avid Technology, Inc.*  
MCXpress

*Eastman Kodak Company*  
Multi-Media Software

*Kinetix*  
Kinetix 3D Studio MAX

*Macromedia*  
Macromedia Director  
Macromedia Extreme 3D

*NewTek, Inc.*  
NewTek 3D Graphics Channel  
(Lightwave 3D)  
NewTek 3D Video Channel  
(Video Toaster and Flyer)

*Softimage, Inc.*  
Softimage

*Truevision*  
TARGA-1000 series  
TARGA-2000 series

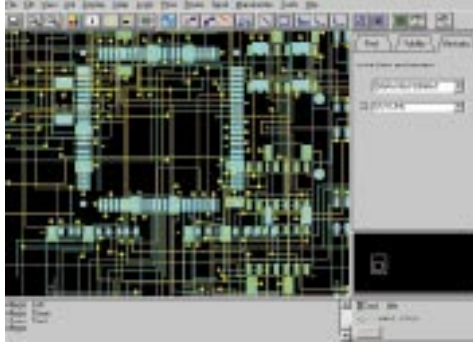
### IBM IntelliStation M Pro 6889 Technical Specifications Optimized for Digital Media Creators

<b>Processor</b>	400MHz, dual capable
<b>Memory</b>	128MB
<b>Hard drive</b>	9.1GB/7,200rpm <sup>4</sup> Ultra Wide SCSI with SMART
<b>Graphics</b>	Permedia Integraph Intense 3D Pro 3400

# i! IntelliStation

To discover more about the IntelliStation,  
visit [www.ibm.com/pc/us/intellistation](http://www.ibm.com/pc/us/intellistation)

## Electronic Design



### The silicon challenge

The question is no longer "How many gates can you fit on the head of a pin?" but "How fast can you get it to market—and at what cost?" At the 50th anniversary of the transistor, EDA is a discipline in transition. Among the trends well underway is the migration from UNIX to the new industry standard epitomized by the IBM IntelliStation professional workstation. Powered by Intel's most advanced processors and running the software essential to your job—now optimized for Microsoft Windows NT—the IBM IntelliStation is the standards-based successor to proprietary platforms. The impressive integer performance, responsive graphics, generous expandability and seamless integration with current and evolving work environments equips you with a tool that is both an expression—and a conduit—of elegant electronic design.

### Supported Applications

*Cadence Design Systems, Inc.*  
Allegro  
Verilog XL

*Mentor Graphics Corp.*  
Board Station  
Design Architect  
Renoir

*Synopsys*  
FPGAXpress

*Viewlogic Systems, Inc.*  
Workview Office

*Exemplar Logic, Inc.*  
Leonardo  
Galileo

*Zuken-Redac, Inc.*  
CR-5000  
CADSTAR

### IBM IntelliStation M Pro 6889 Technical Specifications Optimized for Electronic Design Engineers

<b>Processor</b>	400MHz, dual capable
<b>Memory</b>	256MB
<b>Hard drive</b>	9.1GB/7,200rpm <sup>4</sup> Ultra Wide SCSI
<b>Graphics</b>	Matrox Millennium II



# IntelliStation

## Financial Services

### **The high-performance/ high-reliability trading solution**

The pressure to perform becomes a passion to win, powered by the IBM IntelliStation. In an industry that reveres "real-time," the new IBM IntelliStation capitalizes on advanced Intel® processor performance, responsive multimedia and generous industry-standard expansion capabilities, plus seamless integration with current and evolving networks. Fortified by IBM's advanced manageability to meet your most critical requirement—relentless reliability. With the exceptional performance and dependability of the IBM IntelliStation, a second saved is a second earned.

### **IBM IntelliStation M Pro 6889 Technical Specifications Optimized for Financiers**

<b>Processor</b>	400MHz
<b>Memory</b>	128MB
<b>Hard drive</b>	9.1GB/7,200rpm EIDE with SMART
<b>Graphics</b>	Matrox Millenium II

### **Supported Applications**

*REUTERS*  
Financial products

*System Programming &  
Network Computing*

*TIBCO, Inc.*  
TIBCO Financial Products

*Townsend Analytics, Ltd.*  
TAL Trading Tools



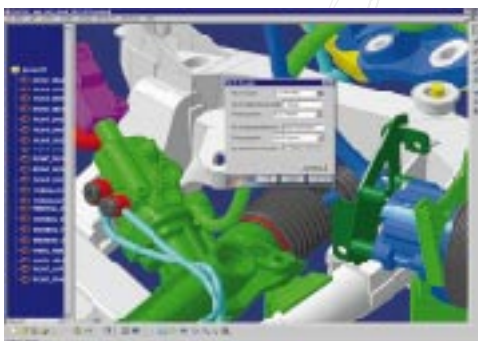
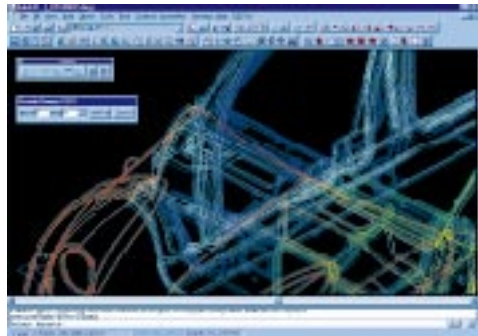
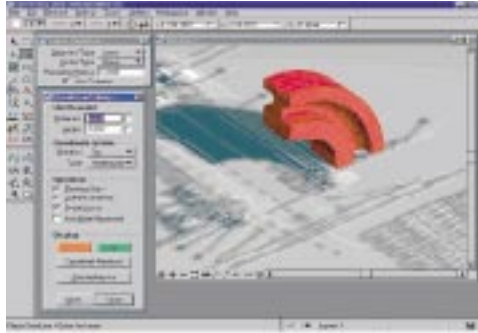




# IntelliStation

## Engineering

To discover more about the IntelliStation, visit [www.ibm.com/pc/us/intellistation](http://www.ibm.com/pc/us/intellistation)



### Achieve more—better and faster— with the IBM IntelliStation

Building the future? The tool you need is here today, ready to meet your daily challenge: to produce more, in less time, with higher quality. A potent tool that sparks invention, forges new connections, reveals new insights. The IBM IntelliStation combines the most advanced Intel Pentium II processors with Microsoft Windows NT 4.0, the new standard for 32-bit computing. Result? Technical workstation performance and the ultimate in desktop productivity and manageability. Fueled to run your hungry CAD/CAM applications as well as your everyday business suite, the IBM IntelliStation's multi-tasking desktop is the center of your expanding universe. Collaborate across workgroups or across continents—IntelliStation expedites your work from inspiration to Internet connection. Ready to plug-and-go with your current network and interoperable with UNIX environments for the ultimate in cross-platform convenience.

### Supported Applications

- Anslys, Inc.*  
ANSYS
- Autodesk, Inc.*  
AutoCAD
- Bentley Systems, Inc.*  
MicroStation 95
- Dassault Systemes*  
CATIA-CADAM Solutions
- ESRI*  
ArcCAD
- Unigraphics Solutions*  
Unigraphics
- MSC*  
MSC/NASTRAN
- Matra Datavision, S.A.*  
Euclid Designer
- MICROCADAM, Inc.*  
Helix Design System
- PTC*  
Pro/ENGINEER
- SDRC*  
I-DEAS Master Series
- SolidWorks Corporation*  
SolidWorks 97Plus

### IBM IntelliStation M Pro 6889 Technical Specifications Optimized for Engineers

<b>Processor</b>	400MHz, dual capable
<b>Memory</b>	256MB
<b>Hard drive</b>	9.1GB/7,200rpm <sup>4</sup> Ultra Wide SCSI with SMART
<b>Graphics</b>	Integraph Intense 3D Pro 3400 Optimal Geometry Accelerator

## Standard I/O interfaces

- Two USB posts
- Two serial ports (16550)
- One enhanced parallel port (ECP/EPP)
- One 10/100 Ethernet RJ-45
- Enhanced IDE controller (ATA33)
- Dual-channel Ultra Wide SCSI 2x68 pin and 1x50 pin
- Audio line in, line out and microphone input

## Input devices

- 104-key keyboard with palm rest
- IBM three-button mouse
- Headset with microphone

## Advanced manageability

- Wake on LAN-enabled 10/100 Ethernet
- SMART Reaction
- Alert on LAN
- IBM Netfinity Manager
- IBM LANClient Control Manager
- Intel LANDesk Client Manager
- Flash over LAN
- Setup over LAN
- CoSession
- DMI BIOS and Service Layer for Windows NT<sup>5</sup>

## AssetCare

- Asset ID
- Manageability chip (temperature/voltage/tamper/fan speed sensing)
- Enhanced Asset Information Area (EEPROM)
- Self Monitoring, Analysis and Reporting Technology (SMART)
- IBM AntiVirus for Windows NT
- Watergate PC Doctor Diagnostics
- ConfigSafe

## Need more information?

Reseller and general information  
1800 IBM-7255 ext 4750 (U.S.)  
1800 IBM-2255 (Canada)

## IBM Fax Information Service

1800 IBM-3395  
Doc #11167

## World Wide Web (U.S. only)

[www.ibm.com/pc/us/intellistation](http://www.ibm.com/pc/us/intellistation)  
[www.ibm.com/pc/us/options](http://www.ibm.com/pc/us/options)  
[www.ibm.com/pc/ca/intellistation](http://www.ibm.com/pc/ca/intellistation) (Canada)

## Options by IBM

Memory (100MHz SDRAM):

64MB	01K1130
128MB	01K1131
256MB	01K1132
PCI token-ring w/ WOL	86H1880

Hard disk drive:

6.4GB/7,200rpm EIDE	01K1329
9.1GB/7,200rpm EIDE	01K1330
9.1GB/7,200rpm Ultra Wide SCSI	01K1328
9.1GB/10,000rpm Ultra Wide SCSI	01K1315

Second Processor:

Intel 350MHz processor	10L5883
Intel 400MHz processor	10L5884

## Standards supported

- FCC Part 15, Class A; UL 1950  
First Edition; CSA C22.2 No. 950;  
ANSI 12.10; GOP TUV-GS

<sup>1</sup> MHz only measures microprocessor internal clock speed, not application performance. Many factors affect application performance.

<sup>2</sup> Asset ID allows your IntelliStation to be "scanned" by various radio frequency devices supplied by independent companies. Asset ID is intended for use only with radio Frequency equipment that meets ANSI/IEEE C95.1 1992 RF Radio Frequency Limits.

<sup>3</sup> Diskettes and hard copy documentation available at extra charge.

<sup>4</sup> 9.1GB disk drive capacity with ULTRA DMA is possible only with system units that have a busmaster driver that supports Ultra DMA and hard drive sizes greater than 8.4GB.

<sup>5</sup> BIOS DMI 2.1 compliant. Service Layer DMI 2.0 compliant

Screen images courtesy of Unigraphics Solutions, Adobe Systems, Inc., Macromedia, Kinetix, Xaos, Cadence, Zuken-Redac, Reuters, Data Broadcasting Corporation, Tibco, Bentley Systems, Inc., Autodesk, Inc., Dassault Systemes and PTC.

IBM, IntelliStation, LAN Client Control Manager, Client Services for Netfinity Manager, SystemXtra, SMART Reaction, Asset ID, Alert on LAN, Wake on LAN and IBM AntiVirus for NT are trademarks or registered trademarks of International Business Machines Corporation. Microsoft, Windows, Windows NT, and

the Windows NT logo are trademarks or registered trademarks of Microsoft Corporation. Intel, Pentium II, MMX and LANDesk Client Manager are trademarks or registered trademarks of Intel Corporation. UNIX is a registered trademark in the U.S. and other countries licensed exclusively through X/Open Company Limited. Other trademarks or registered trademarks are the properties of their respective companies.

IBM reserves the right to alter specifications and other product information without prior notice.

This publication was produced in the United States. IBM may not offer products, services or features discussed in this document in other countries and the information is subject to change without notice. Consult your local IBM representative for information on the products, services and features available in your area.

International Business Machines provides this publication "as is" without warranty of any kind, either expressed or implied, including but not limited to, the implied warranties of merchantability or fitness for a particular purpose. Some jurisdictions do not allow disclaimer of express or implied warranties in certain transactions, therefore, this statement may not apply to you.



© International Business Machines Corporation 1998

Printed in the United States of America  
4-98  
All Rights Reserved



Printed on recycled paper containing 10% recovered post-consumer fiber.

